

043446

RECEIVED
LARAMIE COUNTY
CHEYENNE, WY.

CERTIFIED LAND CORNER RECORDATION

'88 MAY 5 PM 1 28

DESCRIPTION OF CORNER EVIDENCE FOUND, AND ORIGINAL RECORD (if known)
Found 1 1/2" aluminum cap set in earlier survey flush with ground and stamped
"BRW Noblitt L.S. 2500" lying in East West fence.

S.29 S.28
S.32 S.33
T.14N., R.64W.
6th P.M.

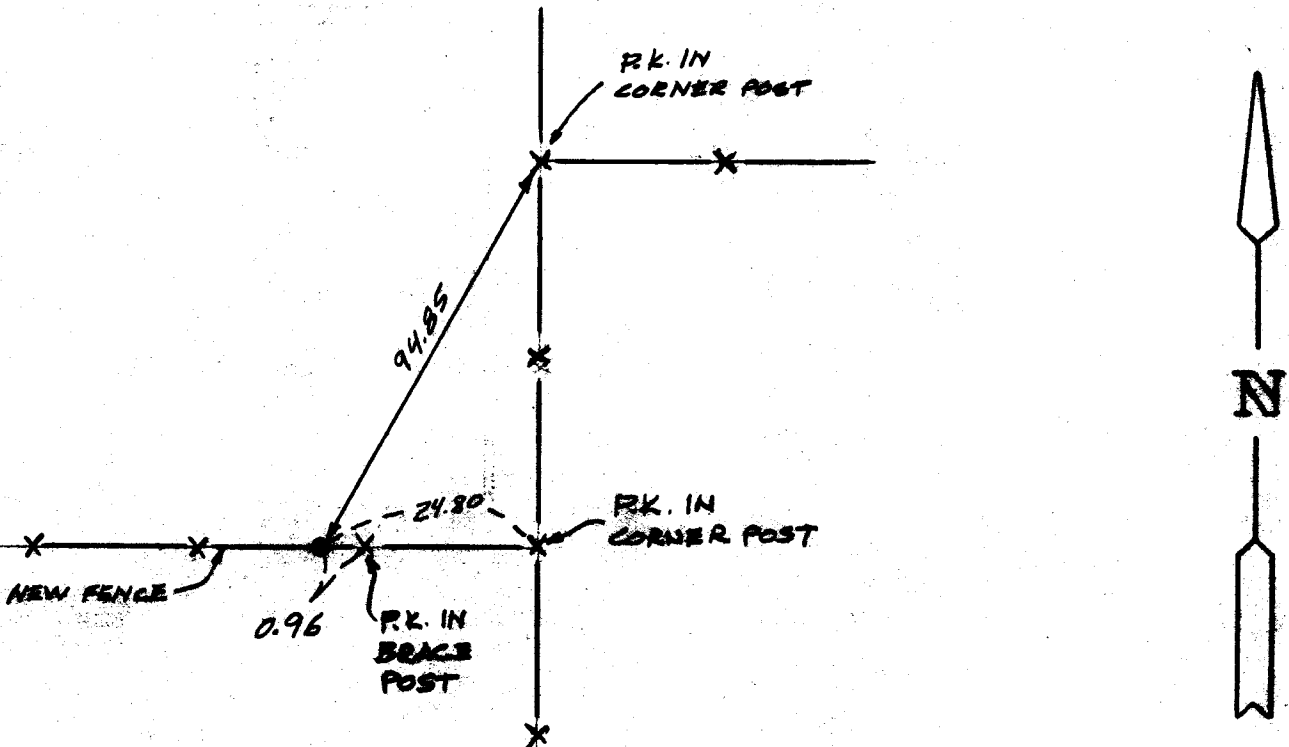
G.L.O. Record - Red sanstone 21" x 12" x 8", Alfred M. Rogers, June 16,
1871.

DESCRIPTION OF MONUMENT AND ACCESSORIES ESTABLISHED
TO PERPETUATE THE ORIGINAL LOCATION OF THIS CORNER:

At the corner: Not remonumented.

Accessories : See ties below.

SKETCH, WITH COURSE AND DISTANCE TO ADJACENT CORNER IF DETERMINED IN THIS SURVEY.
(May Sketch or Paste Reproduction on Reverse Side.)



I, John A. Steil certify that I have carefully performed or reviewed the work
done on the diagrammed corner as reported on this recordation form and approve the same.

John A. Steil
Signature of Surveyor

L.S. 2500
Registration No.

STATE OF WYOMING,
Office of Clerk and Recorder,
County of Laramie

This "corner record" was filed for record on the 5th day of May, 1988, was noted
on the cross-index plat and is assigned page No. 1962, in book No. 1799

James C. Whitehead
County Official

Cross Index No.	V-9	T.	14N	R.	64W	Mer.	6th
		T.		R.		Mer.	
		T.		R.		Mer.	
		T.		R.		Mer.	
		T.		R.		Mer.	
		T.		R.		Mer.	
		T.		R.		Mer.	

BOOK 1259

1988